


Condominium Voltige Phase3 Aria Tower



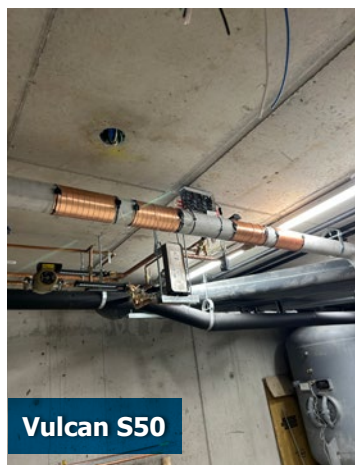
Vulcan Installation Details

Location: Society Real Estate VOLTIGE
in Montreal, Canada

Model:  Vulcan S50 Anti-Scale System is installed at the main cold water line of the building to protect the whole piping system.

Installer: Gestion L.B. Inc | calcairesolution.com

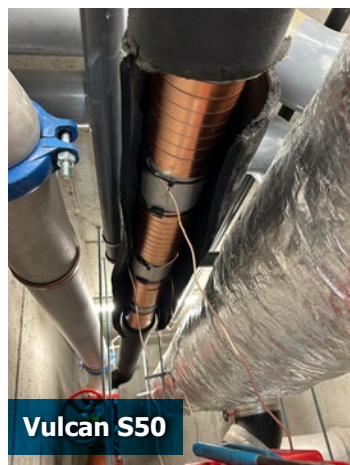
Results: The benefits of the Vulcan devices have been very well received. The circulation pumps and shower heads in each apartment have been successfully unblocked, no longer being affected by limescale. This is the third building they have developed. The company has consistently achieved excellent results.



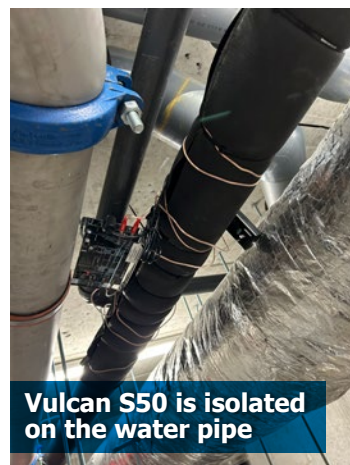
Vulcan S50



Vulcan S50 on the main
water circulation



Vulcan S50



Vulcan S50 is isolated
on the water pipe



This magnificent new tower contains 182 condominiums and stands out from the first two buildings in the project thanks to its U-shape.

www.voltigemtl.ca

VOLTIGE